



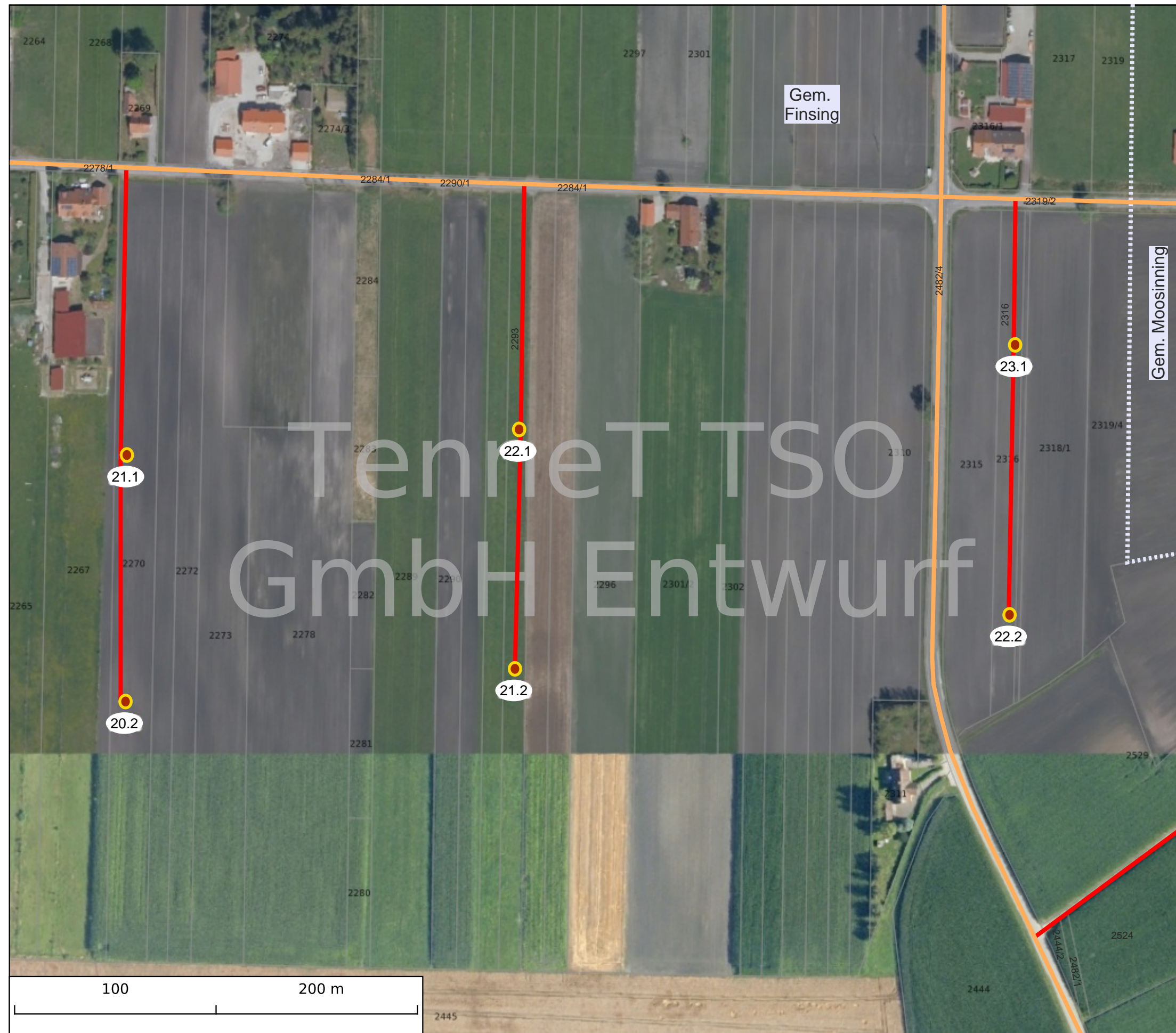


Legende:

-  Kleinrammbohrung + Rammsondierung
-  Zuwegung über befestigte (z.B. Feld-/ Gemeinde-) Wege
-  Zuwegung zu Bohrpunkten
- 542/1 Beispiel Flurstücksnummer
-  Gemarkungsgrenze



1:2000

Karten KBS: 25832
 Koordinateneinheiten: Meter
 Projekt: A080 Oberbachern-Ottenhofen
 Seitendimension: 420 cm x 297 cm
 Datum: 26.07.2023

